

Pathology Lab Tours: *Celebrating* National Laboratory Professionals Week 2017

Come see what we do—take a quick pre-lunch tour!

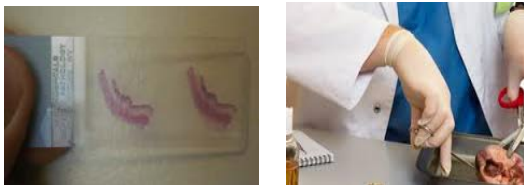
Please contact Renata Karlos, 5-5395 or rlazaro@jhmi.edu, to sign up.
(Other times may be available upon request.)

Mon. April 24

10:00-10:30 a.m. Tour

Surgical Pathology: Grossing & Histology

Starting place: Top of Staircase, Weinberg 2
Karen Bordenet



Tues. April 25

9:00-9:30 a.m. Tour

Core Lab: Chemistry & Hematology

Starting place: Main floor by Zayed Visitor
Elevators
c/o Christine Hostetter

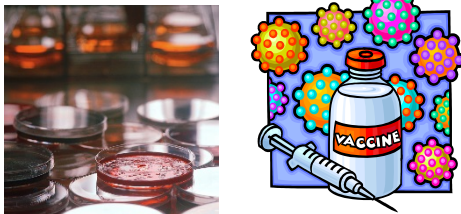


Wed. April 26

11:00-11:45 a.m. Tour

Microbiology & Immunology Labs

Starting place: In front of Hurd Hall
Paula Mister and Brittney Howard



Thurs. Apr 27

10:00 am-10:30 a.m. Tour

Blood Bank (Transfusion Medicine)

Starting place: Main floor by Zayed Visitor
Elevators
Lorraine Blagg



REGISTRATION IS LIMITED. PLEASE SIGN UP EARLY.