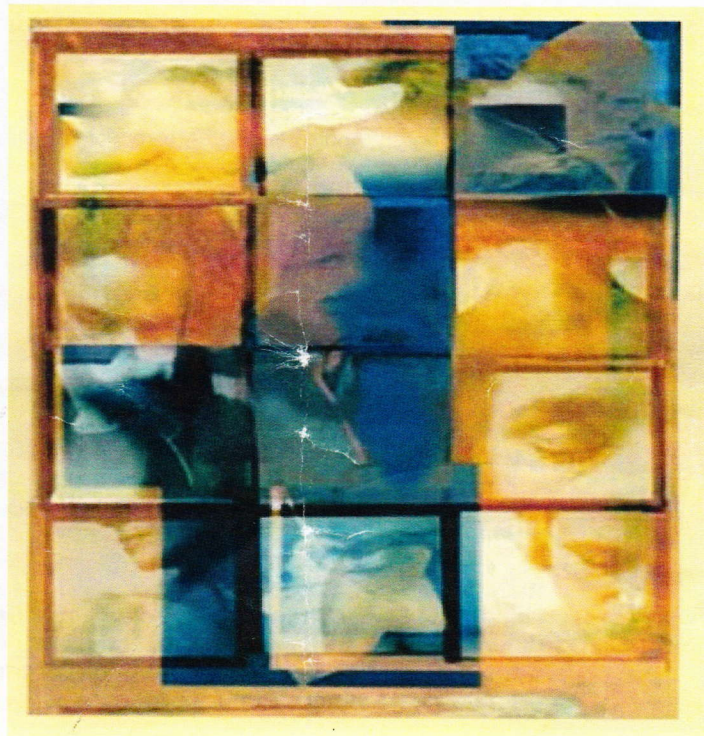


Johns Hopkins Autoimmunity Day
Friday, June 4, 2010



*The Johns Hopkins Bloomberg
School of Public Health
Sheldon Hall
W1214*

Center for Autoimmune Disease Research

Morning Session- C. Lynne Burek, Chair

8:30am - 9:00am	Continental Breakfast- JHSPH courtyard
9:00am - 10:00am	Philippa Marrack, Ph.D., FRS Howard Hughes Medical Institute, National Jewish Health Center, University of Colorado, Denver Sex and B Cells
10:00am - 10:30am	Stephen Desiderio, M.D., Ph.D. Professor of Molecular Biology & Genetics, SOM Temporal and spatial control of V(D)J recombination in health and disease
10:30am - 11:00am	Break - Light Refreshments- JHSPH courtyard
11:00am - 11:30am	Daniela Cihakova, M.D., Ph.D. Assistant Professor, Pathology & Immunology, SOM IL-17 is a key player in development of dilated cardiomyopathy
11:30am - 12:00pm	Richard Pierson, III, M.D. Professor of Surgery, Division of Cardiac Surgery, University of MD, SOM Does loss of tolerance to autoantigens contribute to primate heart allograft injury?

Afternoon Session– Patrizio Caturegli, Chair

12:00pm - 1:30pm	LUNCH- JHSPH courtyard
1:30pm - 2:30pm	Peter Gregersen, M.D. Director, Robert S. Boas Center for Genomics & Human Genetics, Feinstein Institute for Medical Research <i>in Manhasset, NY</i> Genetics of human autoimmunity: connecting genotype to phenotype
2:30pm - 3:00pm	Steven Brant, M.D. Associate Professor, Gastroenterology, SOM The etiology of inflammatory bowel disease uncovered by genetics: focus on innate immunity and immune dysregulation
3:00pm - 3:30pm	Robert Brodsky, M.D. Professor of Hematology, SOM High-dose cyclophosphamide therapy for autoimmunity and alloimmunity
3:30pm-4:00pm	Joel Pomerantz, Ph.D. Assistant Professor, Dept of Biological Chemistry & ICE, SOM Regulation of Antigen-Receptor Signaling to NF- κ B <i>his work focuses on functional specificity and</i> <i>of signal transduction pathways</i>

JOHNS HOPKINS UNIVERSITY

Center for Autoimmune Disease Research

Department of Medicine, Johns Hopkins University School of Medicine

Sponsored by the Johns Hopkins Center for Autoimmune Disease Research, WHO/PAHO Collaborating Center for Autoimmune Disorders, and American Autoimmune Related Diseases Association. For more information please contact Kathy Spinnato at 410-955-0330 or by e-mail kspinnat@jhsp.edu

No registration required.

JOHNS HOPKINS
UNIVERSITY