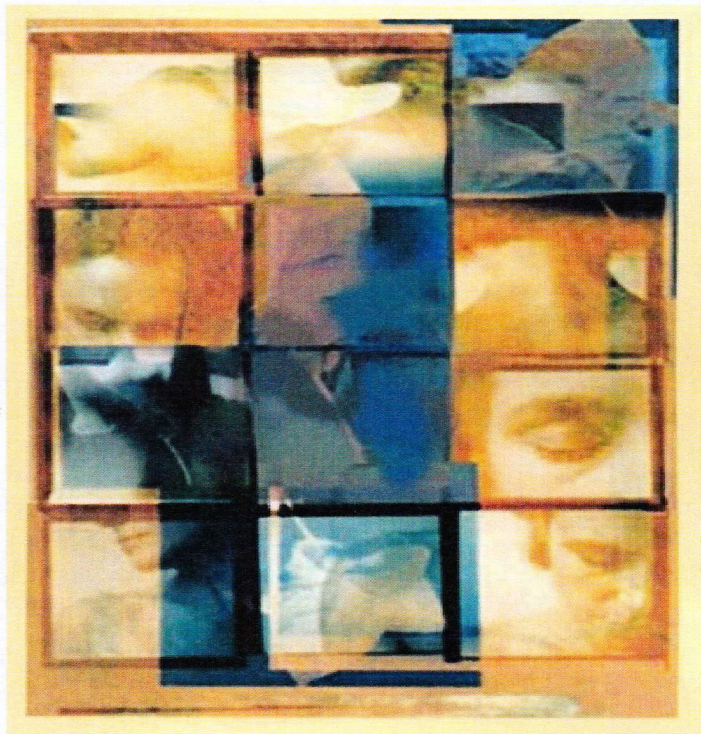


Johns Hopkins Autoimmunity Day
Friday, June 8, 2012



*The Johns Hopkins Bloomberg
School of Public Health
Sheldon Hall
W1214*

Center for Autoimmune Disease Research**Morning Session– Patrizio Caturegli, MD-Chair**

8:00am - 9:00am	Continental Breakfast- JHSPH courtyard
9:00am - 10:00am	William E. Paul, M.D. National Institute of Allergy & Infectious Diseases, NIH, Bethesda, MD Cytokines and CD4 T Cells: Dance Partners at the Immunology Ball
10:00am - 10:30am	Jay Bream, Ph.D. Assistant Professor, Dept of Molecular Microbiology & Immunology, JHBSPH Human IL-10 Expression Patterns and Dis- ease Outcomes
10:30am - 11:00am	Break - Light Refreshments- JHSPH courtyard
11:00am - 11:30am	Scheherazade Sadegh-Nasseri, Ph.D. Associate Professor, Dept of Pathology & Immunol- ogy, Johns Hopkins University, SOM Use of Immune System's Bare Essentials to Detect Autoimmune CD4 T Cell Targets
11:30am - 12:00pm	Martin Flajnik, Ph.D. Professor, Dept of Microbiology & Immunology, SOM, University of MD The Evolutionary History of Innate and Con- ventional B Cells

Afternoon Session– Daniela Cihakova, MD, PhD-Chair

12:00pm - 1:00pm	Lunch– JHSPH courtyard
1:00pm - 2:00pm	Vijay Kuchroo, D.V.M., Ph.D. Professor of Neurology, Brigham & Women's Hospital, Boston, MA Role of Th17 Cells in Inducing Tissue Inflammation and Autoimmunity
2:00pm - 2:30pm	Michael Levy, M.D. Ph.D. Assistant Professor, Dept of Neuroimmunology, Johns Hopkins University, SOM Immunopathogenesis of Neuromyelitis Optica
2:30pm-3:00pm	Break– Light Refreshments– JHSPH courtyard
3:00pm - 3:30pm	Philip Seo, M.D. Assistant Professor of Medicine, Director, Johns Hopkins Vasculitis Center, JHBMC, SOM ANCA-associated Vasculitis: an Update
3:30pm-4:00pm	Xuhang Li, Ph.D. Professor, Dept of Gastroenterology, Johns Hopkins SOM Cytokine/chemokine Network (s) in Pathogenesis of Inflammatory Bowel Disease (IBD)

Sponsored by the Johns Hopkins Center for Autoimmune Disease Research, WHO/PAHO Collaborating Center for Autoimmune Disorders, and American Autoimmune Related Diseases Association. For more information please contact Kathy Spinnato at 410-955-0330 or by e-mail kspinnat@jhsp.edu

No registration required.

JOHNS HOPKINS
UNIVERSITY