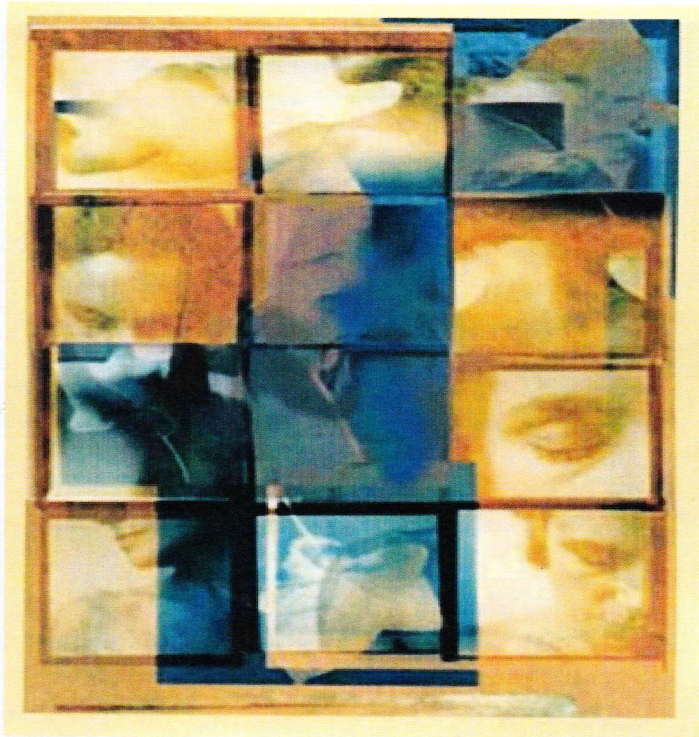


Johns Hopkins Autoimmunity Day
Friday, June 7, 2013



*The Johns Hopkins Bloomberg
School of Public Health
Becton Dickinson
W1020*

Center for Autoimmune Disease Research

Morning Session– Patrizio Caturegli, MD-Chair

8:00am - 9:00am	Continental Breakfast- JHSPH courtyard
9:00am - 10:00am	<p>Keynote speaker- Abul Abbas, M.D. Professor and Chair- Dept of Pathology, University of CA, San Francisco San Francisco, CA</p> <p>Controlling Autoimmunity: The Effector/Regulatory T Cell Balance</p>
10:00am - 10:30am	<p>Franck Housseau, Ph.D. Assistant Professor, Dept of Oncology-Cancer Immunology, Johns Hopkins University, SOM</p> <p>"Bacteroides fragillis and microbial induction of colorectal cancer"</p>
10:30am - 11:00am	Break - Light Refreshments- JHSPH courtyard
11:00am - 11:30am	<p>Violeta Rus, M.D., Ph.D. Associate Professor, Division of Rheumatology & Clinical Immunology University of MD, SOM</p> <p>Role of IL-21 in lupus</p>
11:30am - 12:00pm	<p>Jonathan Schneck, M.D., Ph.D. Professor of Pathology and Medicine and Oncology, Dept of Pathology, Division of Immunology, Johns Hopkins University SOM, Johns Hopkins Institute for Cellular Engineering (ICE)</p> <p>Artificial Antigen Presenting Cells, aAPC: A platform technology for immunomodulation</p>

Afternoon Session– Daniela Cihakova, MD, PhD-Chair

12:00pm - 1:00pm	Lunch– Anna Baetjer room
1:00pm - 2:00pm	Keynote speaker- Richard Flavell, Ph.D., FRS Sterling Professor and Chair- Dept of Immunobiology, Yale University, New Haven, CT Investigator, Howard Hughes Medical Institute Humanized Mice to Study the Human Condition
2:00pm - 2:30pm	Susan Hutfless, Ph.D. Instructor, Dept of Gastroenterology, Johns Hopkins SOM Infections and Antibiotics: Are there links to Inflammatory Bowel Disease?
2:30pm-3:00pm	Break– Light Refreshments– JHSPH courtyard
3:00pm - 3:30pm	Anne Gocke, Ph.D. Assistant Professor, Dept of Neurology, Johns Hopkins University, SOM The Immunoregulatory Role of Kv1.3 Deletion in EAE
3:30pm-4:00pm	Fengyi Wan, Ph.D. Assistant Professor, Dept of Biochemistry & Molecular Biology, JHBSPH “Role of a novel KH domain protein in experimental autoimmune encephalomyelitis”

Sponsored by the Johns Hopkins Center for Autoimmune Disease Research, WHO/PAHO Collaborating Center for Autoimmune Disorders, and American Autoimmune Related Diseases Association. For more information please contact Kathy Spinnato at 410-955-0330 or by e-mail kspinnat@jhsph.edu

No registration required.

JOHNS HOPKINS
U N I V E R S I T Y