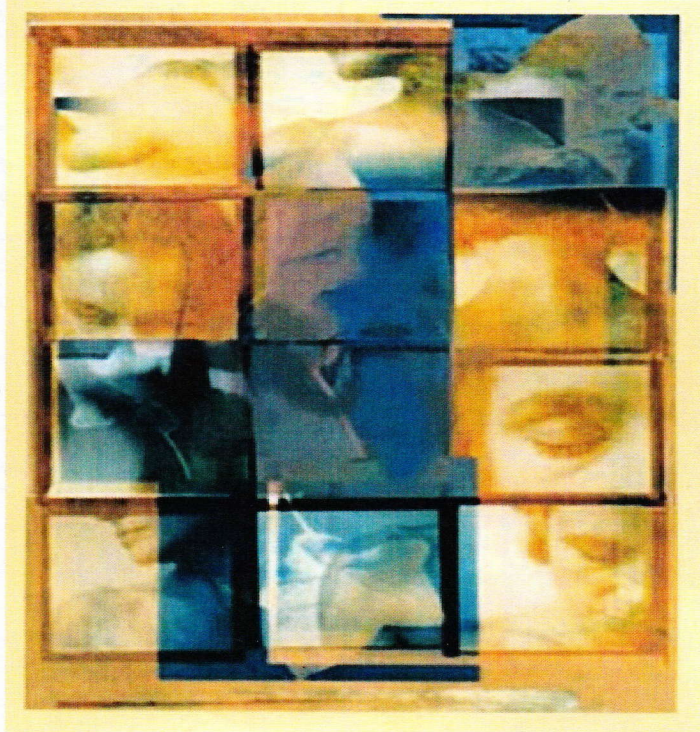


Johns Hopkins Autoimmunity Day
Friday, June 6, 2014



*The Johns Hopkins Bloomberg
School of Public Health
Becton Dickinson
W1020*

Center for Autoimmune Disease Research

Morning Session– Patrizio Caturegli, MD-Chair

8:00am - 9:00am	Continental Breakfast– Anna Baetjer room
9:00am - 10:00am	Keynote speaker– Ian R. Mackay, M.D. Department of Biochemistry & Molecular Biology, Monash University, Australia "The Autoimmune Diseases– histories and mysteries
10:00am - 10:30am	Erika Darrah, Ph.D. Division of Rheumatology, Dept of Medicine, Johns Hopkins University, SOM "Enzyme activating antibodies in severe rheumatoid arthritis"
10:30am - 11:00am	Break - Light Refreshments– Anna Baetjer room
11:00am - 11:30am	Anthony Gaspari, M.D. Department of Dermatology, University of MD, SOM "Toll-like receptors and the ultraviolet light response in the skin"
11:30am - 12:00pm	Lisa Christopher-Stine, M.D., MPH Johns Hopkins Myositis Center, Johns Hopkins University "Statin Myopathy: an autoimmune dis- ease?"

Afternoon Session– Daniela Cihakova, MD, PhD-Chair

12:00pm - 1:00pm	Lunch– Anna Baetjer room
1:00pm - 2:00pm	Keynote speaker– Ann Marshak-Rothstein, Ph.D. University of Massachusetts Medical School, Worcester, MA “Innate and adaptive triggers of systemic autoimmune diseases”
2:00pm - 2:30pm	Marsha Wills-Karp, Ph.D. Dept of Environmental Health Sciences, Johns Hopkins Bloomberg School of Public Health “Colonization with specific gut-residing bacteria enhance susceptibility to allergic asthma”
2:30pm-3:00pm	Break– Light Refreshments– Anna Baetjer room
3:00pm - 3:30pm	Jobert Barin, Ph.D. Dept of Pathology, Division of Immunology, Johns Hopkins University, SOM “The commensal microbiota programs inflammatory cardiac remodeling”
3:30pm-4:00pm	Suzanne Topalian, M.D. Dept of Surgery & Oncology, Johns Hopkins University, SOM “PD-1pathway blockade: Mobilizing the immune system to treat cancer”

Sponsored by the Johns Hopkins Center for Autoimmune Disease Research, WHO/PAHO Collaborating Center for Autoimmune Disorders, and American Autoimmune Related Diseases Association. For more information please contact Kathy Spinnato at 410-955-0330 or by e-mail kspinnat@kspinna1@jhu.edu

No registration required.

JOHNS HOPKINS
UNIVERSITY