



Clinical Gastrointestinal Pathology Director
Lysandra Voltaggio, M.D.

For more information:

Visit: <http://www.hopkinsconsults.org>

or

Call: 410-955-2405

Between 8 am and 4:30 pm ET

or

Email: pathologyconsult@jhmi.edu

To send your slides:

Johns Hopkins Medical Laboratories
Department of Pathology
1620 McElderry St
Reed Hall Room 315
Baltimore, MD 21205



**Johns Hopkins
Gastrointestinal,
Liver, and Pancreas
Consultation Service**



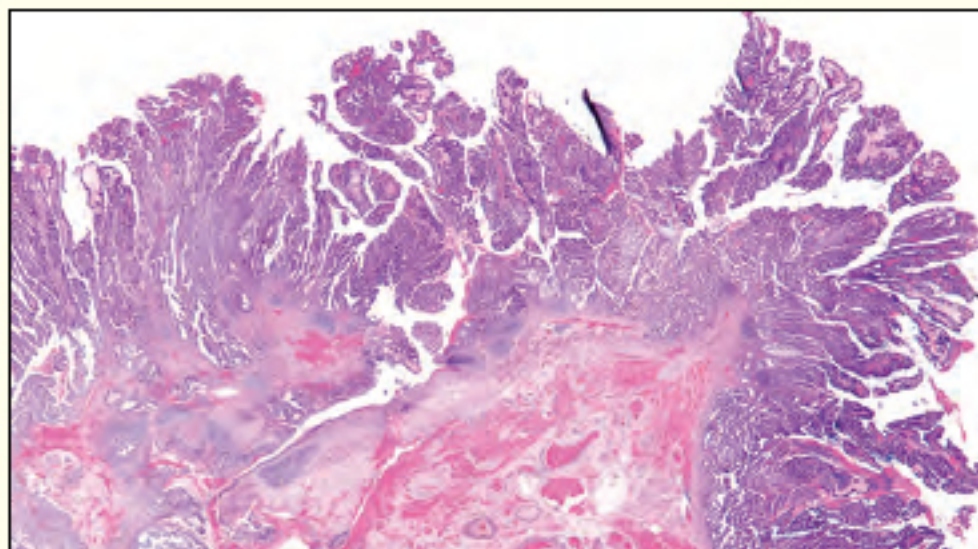
JOHNS HOPKINS
MEDICINE

The Division of Gastrointestinal Pathology at Johns Hopkins is home to many of the world's leaders in GI, liver, and pancreatic pathology. Our experts have vast experience in the field and together are authors to more than 17 books and 1,100 peer-reviewed articles.

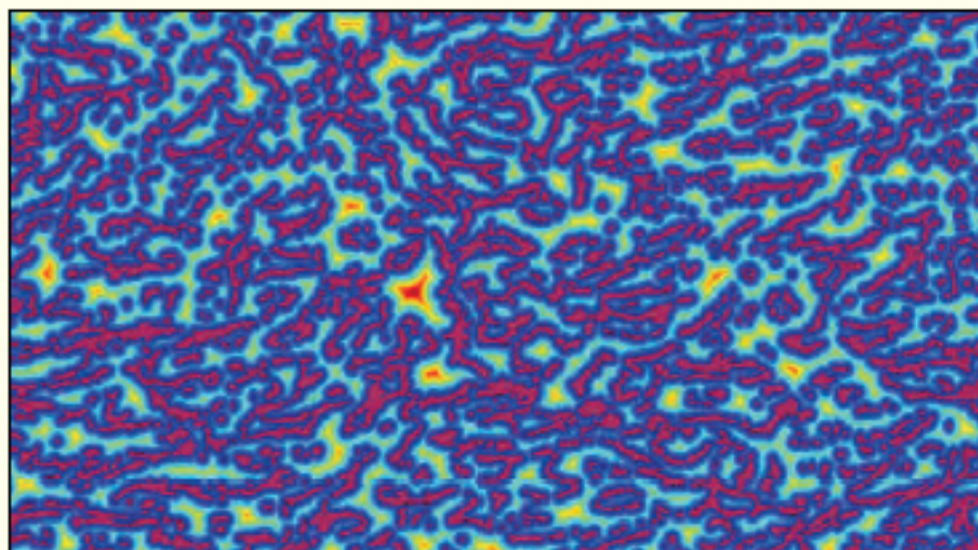
Our turnaround time is approximately 3-5 days. We let you know by fax when your materials arrive and we provide you with a direct line to a receptionist who can answer any initial questions you may have.

Reports are faxed to you upon sign out. Slides and paraffin blocks are returned to you at our expense by FedEx.

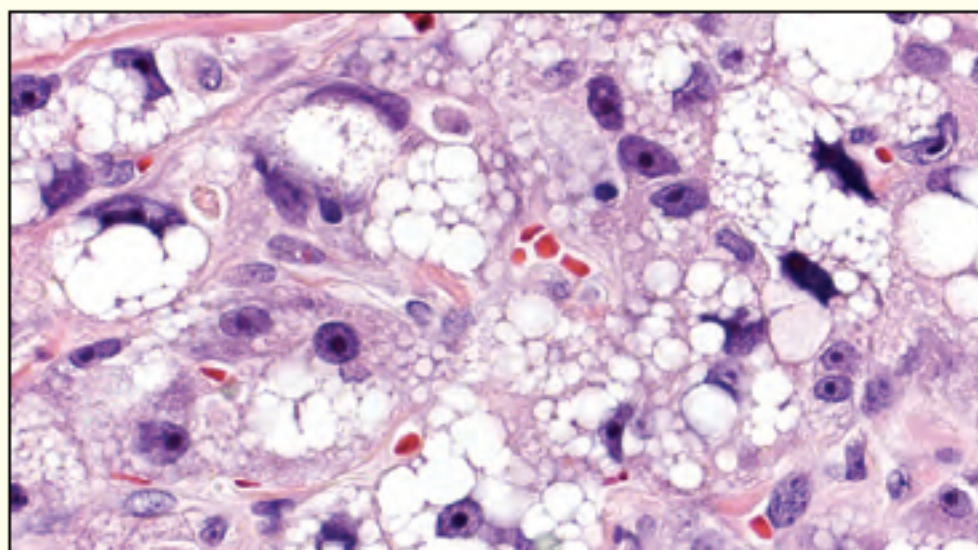
If desired, direct patient billing is available.



HPV-related adenocarcinoma of the anus



Reticulin stain in liver, digital transformation



Acinar cell carcinoma showing lipomatous differentiation

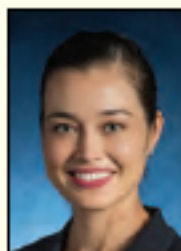
Our Experts



Robert Anders, M.D., Ph.D.
Hepatobiliary pathology.



Ralph Hruban, M.D.
Pancreatobiliary pathology. *(Most highly cited pancreas pathologist in the world).*



Tatianna Larman, M.D.
Colitis-associated dysplasia, early colon cancer, soft tissue, and liver pathology.



Kiyoko Oshima, M.D., Ph.D.
Hepatobiliary and gastrointestinal pathology.



Elizabeth Thompson, M.D., Ph.D.
Pancreatobiliary pathology.



Lysandra Voltaggio, M.D.
Inflammatory and neoplastic gastrointestinal disorders. Liver pathology.